

ARTEC MICRO



Metrology-grade 3D scans

Suitable for quality
control and precision
mechanics

/ For small machine parts, jewelry
and dentistry

/ Professional high accuracy industrial
desktop 3D scanner



Up to **10 microns**
accuracy



Fully-automated
desktop 3D scanner



Easy 3D capture
with just **one click**

AUTOMATED 3D CAPTURE

POWERFUL, ROBUST SOFTWARE

Right out of the box, Micro integrates with the industry-acclaimed Artec Studio for real-time digital capture. See your scans coming to life on the screen. After scanning, Artec Studio makes it easy for you to process your data. Simply follow the same series of steps as you would with our handheld scanners, and then export the final 3D model to software such as SOLIDWORKS, PolyWorks Inspector, Control X and Design X.



SMART 3D SCANNING

Artec Studio's new Smart Scanning feature injects Micro with the power to capture your objects faster, automatically and with unsurpassed results.

Smart Scanning's algorithms compute the ideal scanning path in order to digitize every surface of your object from every needed angle. With the optimal number of frames captured, file sizes are reduced and your scans are ready to go in minutes.

THE CUTTING EDGE OF DESKTOP 3D SCANNING

Artec Micro brings the latest in scanning technology to your desktop. Its advanced twin cameras and blue LED lights are perfectly synchronized with Micro's dual-axis rotation system (swing & rotation) to create the ultimate digital copy of your object with a minimum of frames captured.

Maximum object size:
90 × 60 × 60 mm



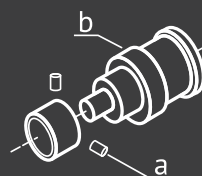
APPLICATIONS

The possibilities are limitless



QUALITY INSPECTION

Across a variety of industries, there is a growing need for ensuring that product quality levels are as high as possible. Delivering extremely-high-precision scans at up to 10 microns' accuracy, not only can Micro "see" well below the human visibility threshold of 40 microns, but its 3D measurements are among the best in today's cutting edge scanners, making it a perfect choice for inspection and much more.



REVERSE ENGINEERING

Whether you have a small part to reproduce for which no blueprint exists, or you need to quickly redesign or simply modify an existing part and either mill or 3D print it, Artec Micro can do the job. Accelerate your design, prototype, and production cycle by weeks and save thousands in the process.



CULTURAL HERITAGE PRESERVATION

Artec Micro gives you the power to make highly-detailed 3D models of a multitude of small cultural objects in just minutes. From there, these models can be archived, or easily shared with researchers and others either locally or around the world, or sent to a 3D printer for printing in a variety of materials.



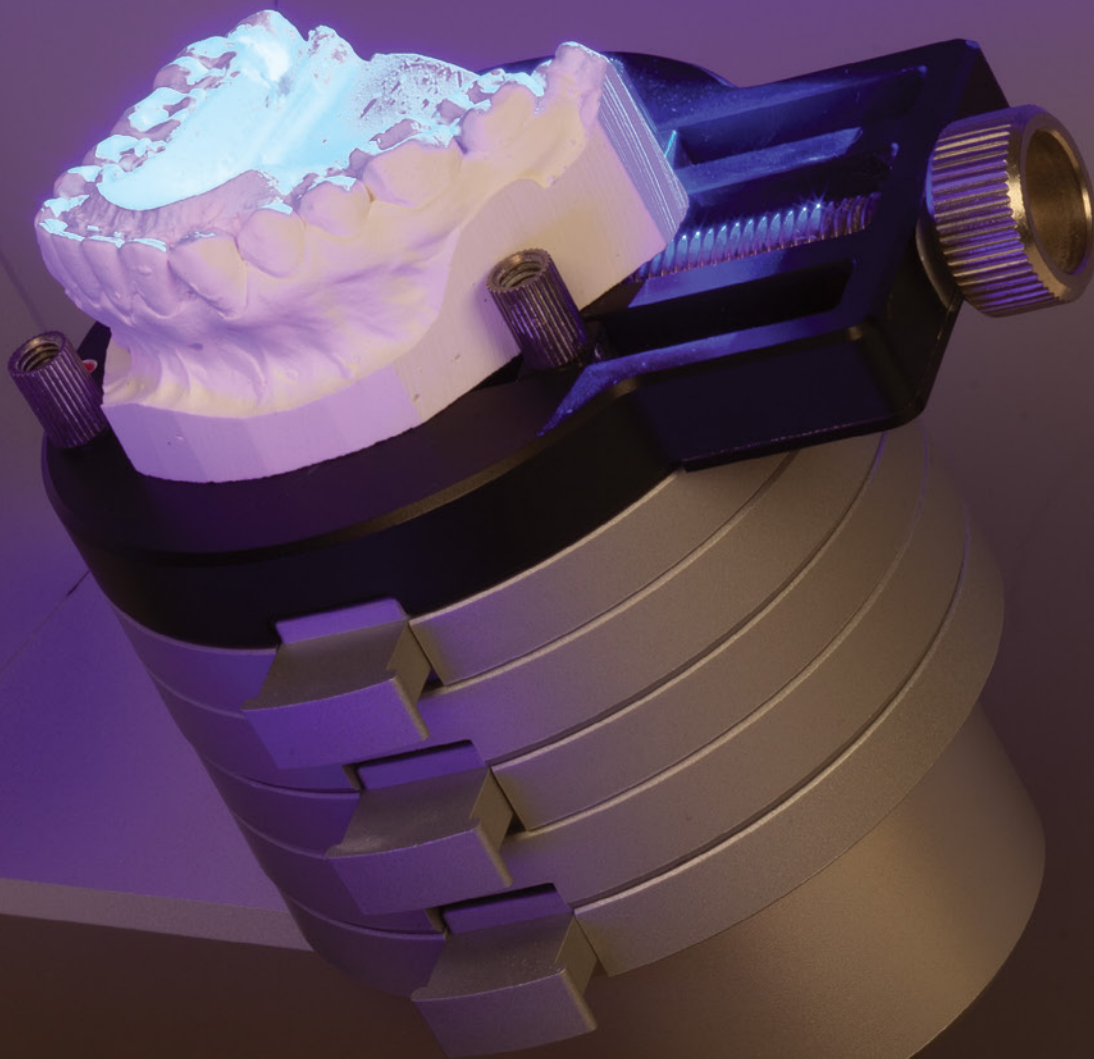
JEWELRY

Forget about the traditional method of calipers and tracing methods. In minutes, Artec Micro transforms intricate jewelry items into CAD/CAM data for design, modification, 3D printing, and casting. Saves hours of time in the design and production of complex and highly-detailed jewelry pieces such as rings, pendants, bracelets, cameos, and more.



DENTISTRY

Artec Micro is ready for today's dental practice, creating precise CAD/CAM-ready 3D scans for lab use and 3D printing. Ideal for scanning single teeth, entire arches, or complex impressions. Export from Artec Studio to ExoCAD and other dental software. Perfect for making exact digital reproductions and archival of crowns and bridges, inlays and onlays, dentures, custom abutments, implants, and more.



SPECIFICATIONS

	MICRO	SPACE SPIDER	EVA	LEO
3D point accuracy, up to	0.01 mm	0.05 mm	0.1 mm	0.1 mm
3D resolution, up to	0.029 mm	0.1 mm	0.5 mm	0.5 mm
Scanner type	Desktop	Handheld	Handheld	Handheld
Ability to capture texture	Yes	Yes	Yes	Yes
Texture resolution	6.4 mp	1.3 mp	1.3 mp	2.3 mp
Colors	24 bpp	24 bpp	24 bpp	24 bpp
Data acquisition speed, up to	1 mln points / sec.	1 mln points / sec.	2 mln points / sec.	3 mln points / sec.
3D exposure time	Customizable	0.0002 s	0.0002 s	0.0002 s
2D exposure time	Customizable	0.0002 s	0.00035 s	0.0002 s
3D light source	Blue LED	Blue LED	Flash bulb	VCSEL
Interface	USB 3.0	1 × USB 2.0, USB 3.0 compatible	1 × USB 2.0, USB 3.0 compatible	Wi-Fi, Ethernet, SD card
Supported OS	Windows 7, 8 or 10 x64	Windows 7, 8 or 10 x64	Windows 7, 8 or 10 x64	Scanning: No computer required Data processing: Windows 7, 8, 10 x64
Minimum computer requirements (Please refer to www.artec3d.com for detailed hardware requirements)	i5, i7, or i9 recommended, 32GB RAM	i5, i7, or i9 recommended, 18GB RAM	i5, i7, or i9 recommended, 12GB RAM	Scanning: No computer required Data processing: i5, i7, or i9 recommended, 32GB RAM
Power source	AC power	AC power or external battery pack	AC power or external battery pack	Built-in exchangeable battery, optional AC power
Dimensions, H × D × W	290 × 290 × 340 mm	190 × 140 × 130 mm	262 × 158 × 63 mm	231 × 162 × 230 mm
Weight	12 kg / 26.7 lb	0.8 kg / 1.8 lb	0.9 kg / 2 lb	2.6 kg / 5.7 lb
3D mesh formats	OBJ, PLY, WRL, STL, AOP, ASC, Disney PTX (PTEX), E57, XYZRBG			
CAD formats	STEP, IGES, X_T			
Formats for measurements	CSV, DXF, XML			



Contactez un revendeur près de chez vous:

 + 33 (0)1 39 30 65 06

 info@cadvision.fr

Faites confiance au leader en France

IMPRIMANTES 3D ET CAO POUR LES PROFESSIONNELS



Esprit de service

Réactivité au quotidien, et adaptabilité aux besoins de nos clients sont la meilleure expression de notre esprit de service.
Support technique de nos clients au travers d'une maintenance de proximité et de qualité.
Services : Formations, Assistance sur site et consulting.

Qui Sommes-Nous

Filliale du groupe d'ingénierie français ING'EUROP, CADvision assure la commercialisation, la mise en place, les services de formation et le suivi technique sur l'ensemble de la gamme Stratasy.

Leader français sur le marché des imprimantes 3D professionnelles, nous revendons également des solutions de CAO 3D.

Quelques références clients :

AFM - AGCO - AIRBUS - ALCATEL-LUCENT - ALDEBARAN ROBOTICS - ALSTOM - AMESYS - ARCELOR MITTAL - ARVINMERITOR - ASTRIUM - ATMEL - AXEL - BAYER - BODET - BRUKER BIOSPIN - BWI - CANON - CASSIDIAN - CCG VERITAS - CEA - CHUBB SECURITE - CNES - CNRS - COBHAM - CONTINENTAL - COTY PRESTIGE BEAUTY - CYBERNETIX - DANONE - DCNS - DECATHLON - DELPHI - EADS - ESSILOR - E-SWIN - FAGORBRANDT - FIVES - FAURECIA - GE HEALTHCARE - GECINA - GILSON - GROUPE SEB - GROUPE CARAVELLE - HORIBA - HUTCHINSON - IFP - IFREMER - IMAJE MARKEM - INEO - INTERTECHNIQUE - ITER - ITW - JAEGER - JDSU - JOHNSON CONTROLS - KBS - KEOPSY - LEGRAND - LES IUT - LES LYCEES TECHNIQUES - LES ECOLES D'INGENIEURS - LISI - LORIENCE - L'OREAL - MAIF - MAPED - MIKLI - MILLIPORE - MINISTERES - MITSUBISHI ELECTRIC - NAGRACARD - NESTLE - NEWELL - NEXTER - OLDHAM - ONERA - ORANGE LABS - PARKEON - PARROT - PHILIPS FRANCE - PITNEY BOWES - PSA PEUGEOT CITROEN - QINETIQ - QUALIFORM - QUALIPAC - QUANTHOUSE - RATP - REFLEX CONSULTING - RENAULT - RENAULT SPORT F1 - ROCKWELL COLLINS - RTE-EDF - SAGEM-SAFRAN - SAINT GOBAIN - SALOMON - SANOFI AVENTIS - SCHLUMBERGER - SCHNEIDER ELECTRIC - SEALYNX - SIEMENS - SNCF - SNECMA - STMICROELECTRONICS - TECHNICOLOR - THALES - TRELLEBORG - TRW CARS FRANCE - TYCO - UNIFIRST - UNIVERSITES FRANCAISES - VALEO - WINLIGHT SYSTEMS - XIRING - YAMAHA - ZODIAC



CADvision SAS
2, rue GALILEE
78280 Guyancourt

Email info@cadvision.fr
Tel +33 (0)1 39 30 65 06
Fax +33 (0)1 39 30 65 08

 www.cadvision.fr